



WORKSHOP #3 FORMULATION OF PROTOCOLS FOR STANDARDISED ASSESSMENT OF THE 'STRUCTURE AND FUNCTION' OF HABITAT TYPES OF COMMUNITY INTEREST

Part 1. General information

PORTUGAL

Catarina Meireles (University of Évora, MED)

November 11st (*online*)

LIFE-CHARCOS

Conservation of Temporary Ponds in the Southwest Coast of Portugal

Habitat 1370*



LIFE-RELICT

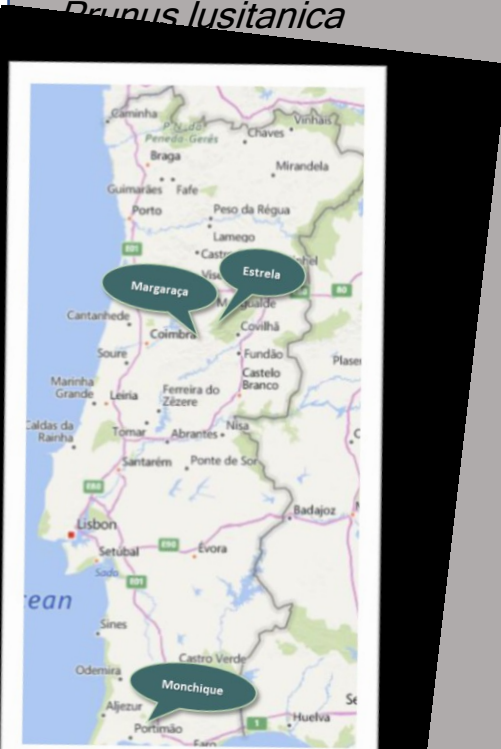
Preserving continental laurissilva Relicts
Habitat 5230*



Prunus lusitanica



Rhododendron ponticum
subsp. *baeticum*



LIFE-CHARCOS

Improve Conservation of
Mediterranean Temporary
Ponds

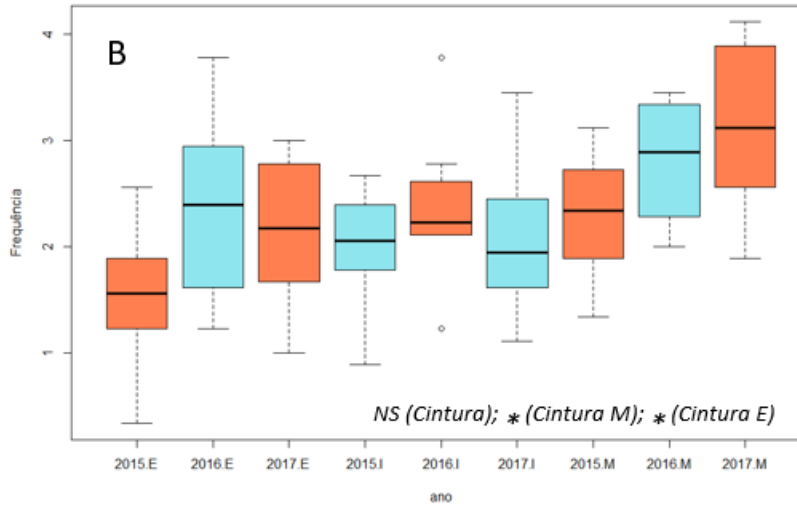


LIFE-CHARCOS

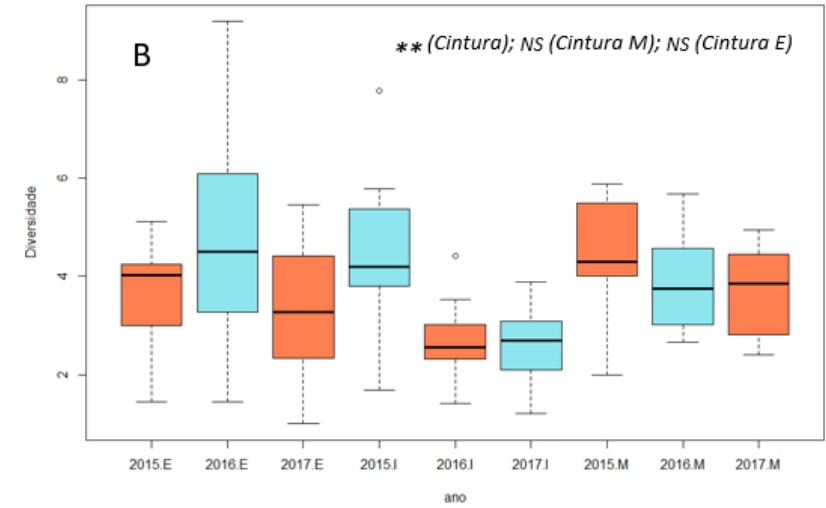


Species frequency in a transect

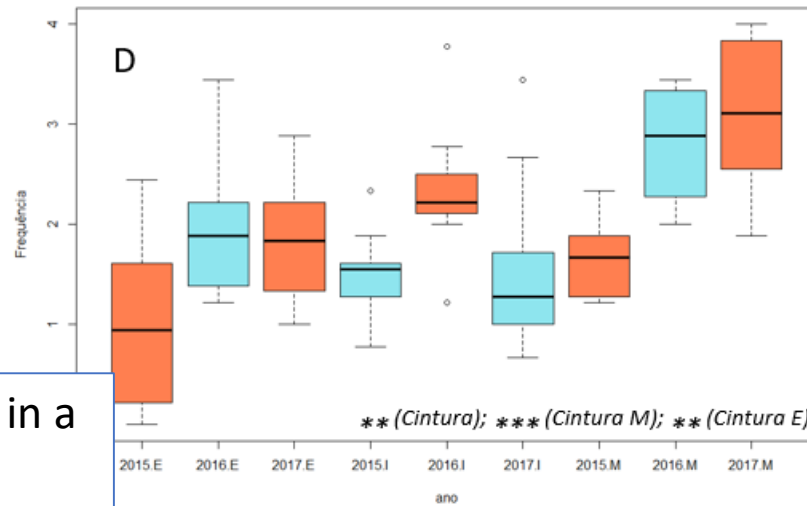
Total de espécies por cintura de vegetação



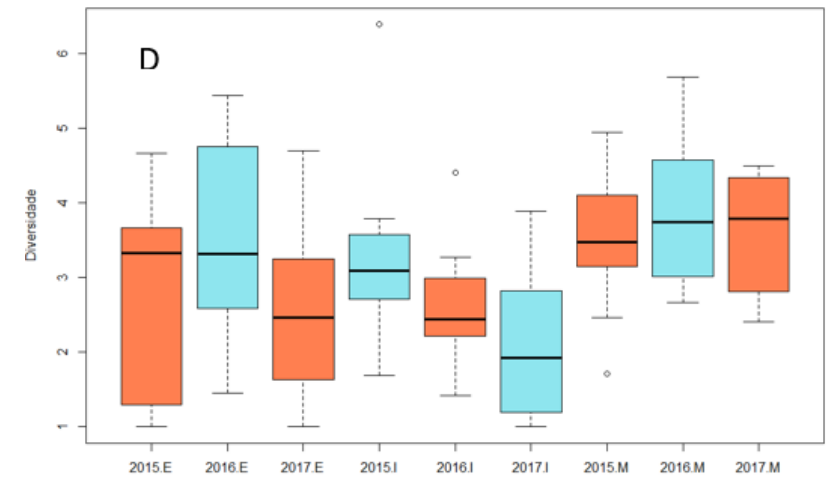
Total de espécies



Espécies típicas por cintura



Espécies Típicas



LIFE-CHARCOS



LIFE-RELICT

Improve Conservation and increase area of Laurissilva relicts



LIFE-RELICT

Permanent plots
installed in
intervention areas



LIFE-RELICT

richness, diversity and cover

- **Typical species**
- **Rare/protected species**

- Species that are **indicators of disturbance** (heliophilous, alien);

- Species **indicating dynamics** in progress.

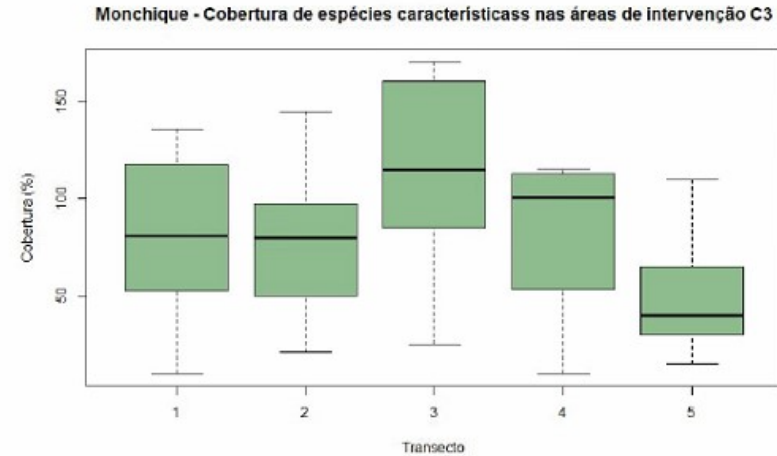


Figura 24. Cobertura de espécies características (valor cumulativo em cada subparcela) das etapas superiores da dinâmica local, observadas nos transectos monitorizados na ação C3 em Monchique.

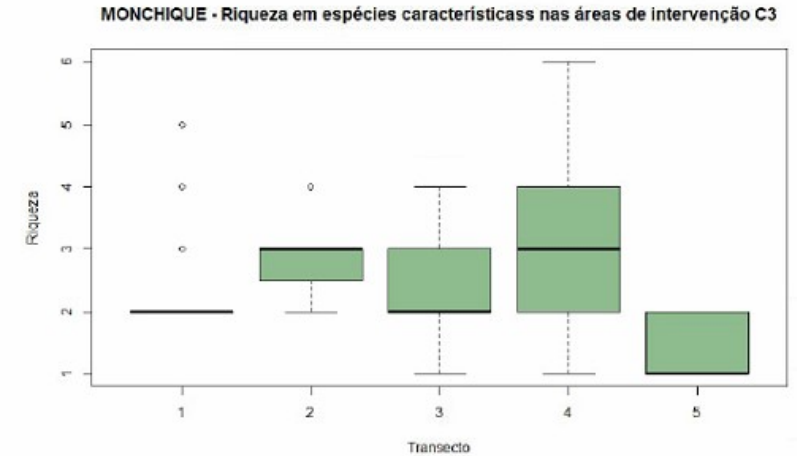


Figura 23. Riqueza em espécies características dos transectos monitorizados na ação C3 em Monchique.

